

Employment Statistics for Case Managers											Mar-26
CMO	Month	Case Managers					Turnover				
		Number on the First Day of the Month	New Hires	Number of Terminations	Number on Last Day of the Month	Net Change	Monthly	Calendar Year-to-Date	Fiscal Year-to-Date	Rolling Year (12-Month)	
Anchorage	Mar-26	14	0	0	14	0	0.0%	0.0%	29.6%	48.3%	
Camelot Adoptions	Mar-26	1	1	0	2	1	0.0%	120.0%	200.0%	200.0%	
DISC Village	Mar-26	32	3	1	34	2	3.0%	23.5%	41.9%	46.5%	
Families First Network (FFN) - Case Management ⁵	Mar-26	93	7	5	95	2	5.3%	14.0%	67.3%	82.9%	
CHS Adoptions	Mar-26	16	0	0	16	0	0.0%	6.5%	12.5%	12.5%	
Twin Oaks - Case Management & Adoptions	Mar-26	26	1	1	26	0	3.8%	7.5%	18.9%	22.2%	
NWF Health Network ⁵	Mar-26	182	12	7	187	5	3.8%	14.6%	72.8%	85.9%	

Employment Statistics for Case Manager Supervisors											Mar-26
CMO	Month	Case Manager Supervisors					Turnover				
		Number on the First Day of the Month	New Hires	Number of Terminations	Number on Last Day of the Month	Net Change	Monthly	Calendar Year-to-Date	Fiscal Year-to-Date	Rolling Year (12-Month)	
Anchorage	Mar-26	3	0	0	3	0	0.0%	0.0%	0.0%	0.0%	
Camelot Adoptions	Mar-26	1	0	0	1	0	0.0%	0.0%	0.0%	0.0%	
DISC Village	Mar-26	8	0	0	8	0	0.0%	12.5%	20.0%	20.0%	
Families First Network (FFN) - Case Management ⁵	Mar-26	17	2	0	19	2	0.0%	5.4%	47.6%	48.8%	
CHS Adoptions	Mar-26	3	0	0	3	0	0.0%	0.0%	66.7%	66.7%	
Twin Oaks - Case Management & Adoptions	Mar-26	6	0	0	6	0	0.0%	0.0%	0.0%	0.0%	
NWF Health Network ⁵	Mar-26	38	2	0	40	2	0.0%	5.1%	50.0%	52.5%	

Caseload Averages ^{1, 4}											Mar-26
CMO/ Circuit/ Agency	Date	Case Managers		Children	Caseloads						
		Case Managers Taking Cases ²	Funded Case Manager/ Specialist FTEs ³	Children Assigned for Primary Supervision	Average Number of Children per Case Manager taking cases	Average Number of Children per funded FTE	# of Case Managers with >25 Children	% of Case Managers with >25 Children			
Anchorage	Mar-26	12	14	172	14.3	12.3	1	8.3%			
Camelot Adoptions	Mar-26	4	3	10	2.5	3.3	0	0.0%			
DISC Village	Mar-26	34	42	757	22.3	18.0	14	41.2%			
FamiliesFirst Network (FFN) Case Management	Mar-26	88	109	1496	17.0	13.7	12	13.6%			
CHS Adoptions	Mar-26	11	21	49	4.5	2.3	0	0.0%			
Twin Oaks Case Management	Mar-26	17	20	260	15.3	13.0	0	0.0%			
Twin Oaks Adoptions	Mar-26	7	7	42	6.0	6.0	0	0.0%			
Circuit 1	Mar-26	99	130	1545	15.6	11.9	12	12.1%			
Circuit 2	Mar-26	38	45	767	20.2	17.0	14	36.8%			
Circuit 14	Mar-26	36	41	474	13.2	11.6	1	2.8%			
NWF Health Network	Mar-26	173	216	2786	16.1	12.9	27	15.6%			

¹Change in Source Report beginning with February-2023 data. Source: NWFHN ad hoc report "NWFHN Caseload Report" derived from FSN

²Based on individuals with primary assignments in FSN

³FTE Updates: 7/24- Twin Oaks reduced from 24 to 23 case management FTE's. Disc reduced from 13 to 11 case management FTE's. Camelot CM FTE's increased from 36 to 38 and their adoptions FTE's decreased from 5 to 3. Overall NWF positions decreased from 228.75 to 225.75. 10/24- FFN Adoptions positions increased from 17 to 20 which increased overall NWF positions from 225.75 to 228.75. 1/25 - FFN CM Positions amended to 109. 2/25- Anchorage CM positions reduced from 16 to 15 and Twin Oaks CM positions reduced from 23 to 21. Disc CM positions reduced from 11 to 9. 3/25 - Camelot CM positions reduced from 38 to 34. 7/25 - Anchorage CM positions reduced from 15 to 14. Twin Oaks CM positions reduced from 21 to 20

⁴11/23- Caseload averages were separated for adoptions and case management for agencies that provide both services.

⁵FFN Adoptions contract ended 10/31/25 causing a large number of terminations for FFN.

	Children in Unlicensed Placements ¹	Children's Legal Staffing Rates - Attorney ³	Children's Legal Staffing Rates - Support Staff ³	Percentage of Required Home Visits ⁴
FamiliesFirst Network Case Management	0	-	-	99.8%
CHS Adoptions	0	-	-	100.0%
NWF Health Network - West/ Circuit 1	0	82.35%	93.75%	99.8%
Camelot Adoptions	0	-	-	100.0%
Disc	0	-	-	99.8%
Circuit 2	0	-	-	98.5%
Twin Oaks Case Management	1	-	-	100.0%
Twin Oaks Adoptions	0	-	-	100.0%
Anchorage	0	-	-	99.9%
Circuit 14	0	-	-	99.9%
NWF Health Network - East	0	73.33%	100.00%	99.9%
Northwest Region	0	-	-	99.1%

Percentage of Families Served by Case Type ⁵									
	Family Support Services			In-Home Services			Out-of-Home Services		
	Number of Children	Number of Families	Percent of Families	Number of Children	Number of Families	Percent of Families	Number of Children	Number of Families	Percent of Families
FamiliesFirst Network Case Management	-	-	-	582	292	35.3%	961	536	64.7%
CHS Adoptions	-	-	-	0	0	0.0%	48	33	100.0%
NWF Health Network - West/ Circuit 1	813	382	31.2%	612	303	24.8%	964	539	44.0%
Camelot Adoptions	-	-	-	0	0	0.0%	9	4	100.0%
Disc	-	-	-	467	233	58.8%	287	163	41.2%
Circuit 2	498	250	38.1%	480	238	36.2%	298	169	25.7%
Twin Oaks Case Management	-	-	-	94	51	33.6%	160	101	66.4%
Twin Oaks Adoptions	-	-	-	0	0	0.0%	42	26	100.0%
Anchorage	-	-	-	56	30	33.0%	111	61	67.0%
Circuit 14	208	106	27.7%	160	85	22.3%	319	191	50.0%
NWF Health Network - East	706	356	34.3%	640	323	31.1%	617	360	34.6%
Northwest Region	1519	738	32.6%	1252	626	27.7%	1581	899	39.7%

Licensing Data ^{6,7}								
	Recruitment Activities	Inquiries	Pre-Service Cycles Completed	Initial Homes	Closed Homes	Total Homes	Total Beds	
Circuit 1 NWF Health Network Licensing	12	23	0	26	18	346	670	
Circuit 1 Contract Provider Licensing	6	4	1	2	5	70	136	
NWF Health Network West Licensing	18	27	1	28	23	416	806	
Circuit 2 NWF Health Network Licensing	19	23	0	5	6	164	305	
Circuit 2 Contract Provider Licensing ⁸				0	0	31	63	
Circuit 14 NWF Health Network Licensing	36	11	0	8	12	119	201	
Circuit 14 Contract Provider Licensing ⁸				0	0	11	12	
NWF Health Network East Licensing	55	34	0	13	18	325	581	
Northwest Region	73	61	1	41	41	741	1387	

¹Data Source - NWFHN Placement Team Tracking

³Data Source - <https://www.myflfamilies.com/staffing-rates> on 04/06/2026

⁴Data Source - OCWDRU Report #1144

⁵Data Sources - OCWDRU Report #1331 and #1077

⁶NWF Health Network does not recruit or license group homes.

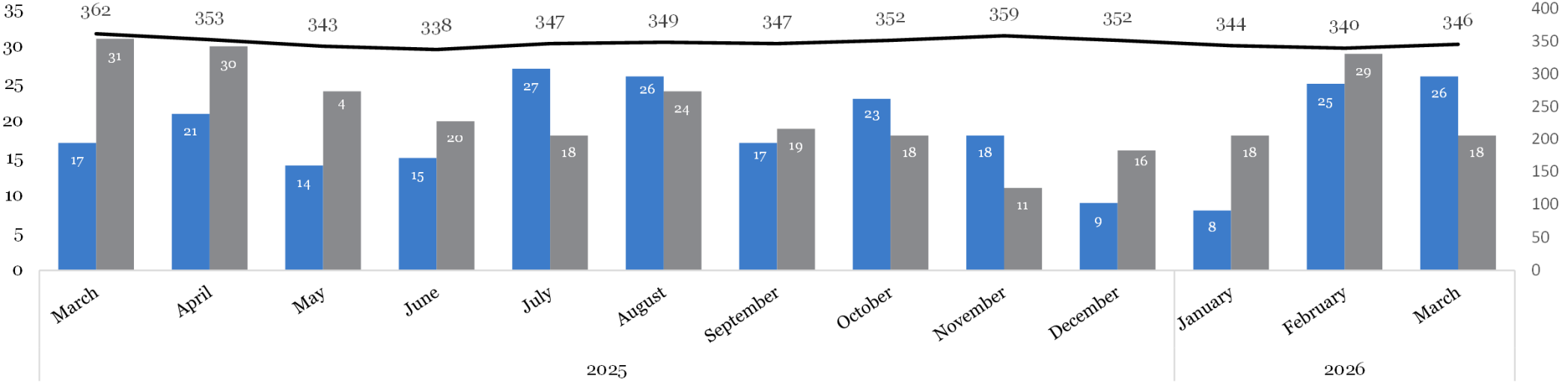
⁷Data source is NWF Licensing Tracking which uses OCWDRU Report #1268 and #1088

⁸NWF Health Network utilizes One More Child and Boystown foster homes in circuits 2 and 14 but does not have a contract so recruitment, inquiry, and pre-service data is not available.

NWF Health Network - West Licensing Summary

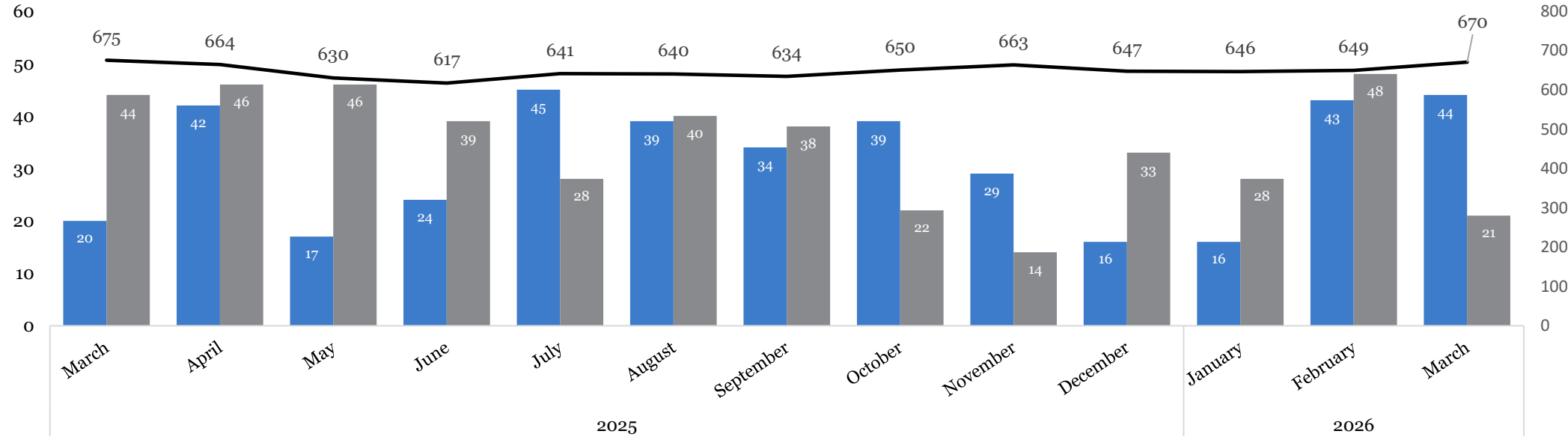
Licensed Home Summary

Initial Homes Closed Homes Total Homes



Licensed Bed Summary

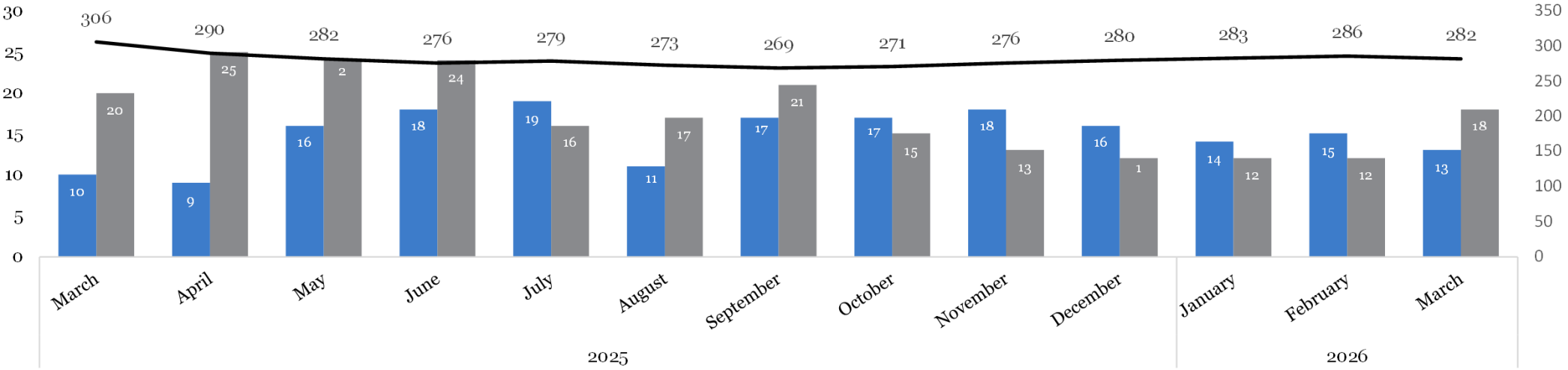
Initial Beds Closed Beds Total Beds



NWF Health Network - East Licensing Summary

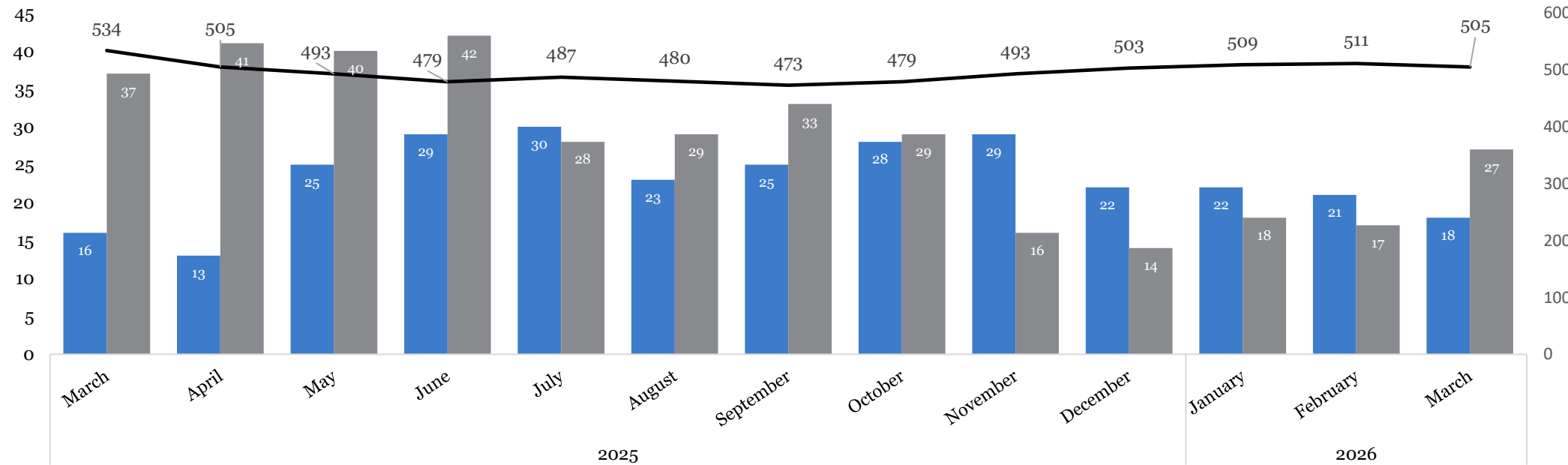
Licensed Home Summary

Initial Homes Closed Homes Total Homes

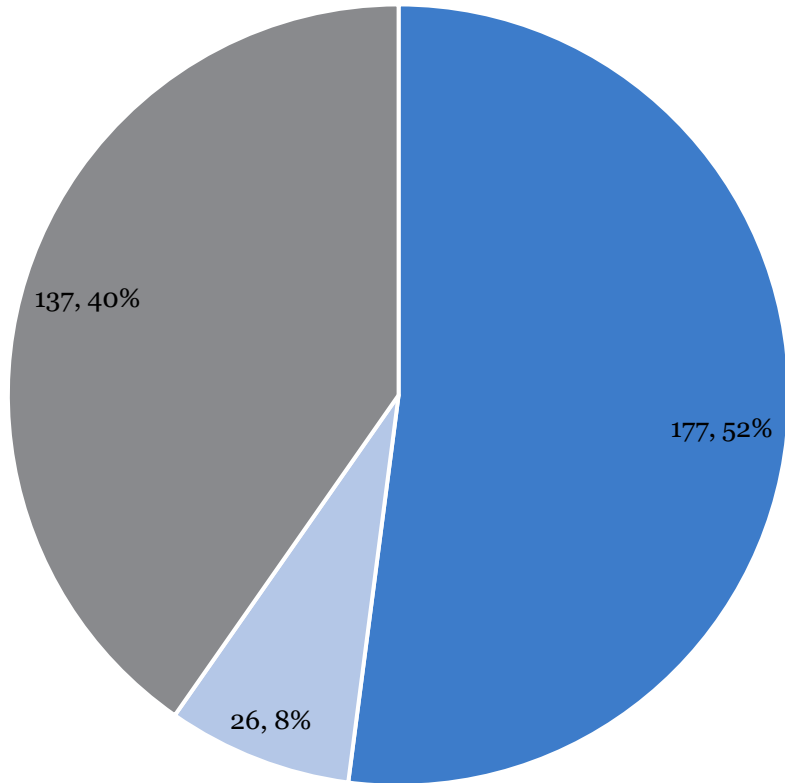


Licensed Bed Summary

Initial Beds Closed Beds Total Beds

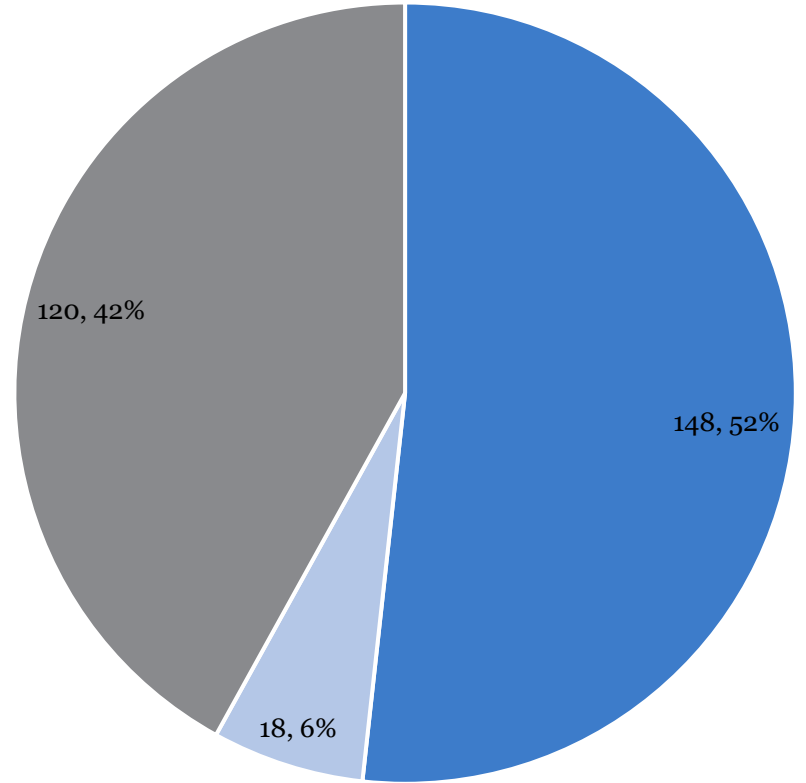


Breakdown of Foster Homes by License Type
NWF Health Network - West



- Child Specific (Level I)
- Enhanced/Specialized (Level IIE-V)
- Non-Child Specific (Level II)

Breakdown of Foster Homes by License Type
NWF Health Network - East



- Child Specific (Level I)
- Enhanced/Specialized (Level IIE-V)
- Non-Child Specific (Level II)